



Stontek[®]
C A B I N E T R Y



TABLE OF CONTENTS

| | |
|------------------------------|-------|
| About Us | 4-5 |
| Cabinet Styles | 6-9 |
| Shaker Cabinets | 6-7 |
| Sunset Cabinets | 8-9 |
| Cabinet Construction | 10-11 |
| Product Specifications | 12-29 |
| Wall Cabinets | 12-17 |
| Base Cabinets | 18-21 |
| Vanity Cabinets | 22-23 |
| Tall Cabinets | 24 |
| Fillers and Panels | 25 |
| Molding and Trim | 26-27 |
| Accessories | 28-29 |



Crafted with Premium Materials

Quality is at the core of everything we do, starting with the materials we use. At Stontek® Cabinetry, we exclusively utilize premium woods such as birch, American white oak, and Canadian maple to construct our cabinets. This commitment to using the finest materials ensures that our cabinets are not only visually appealing but also built to withstand the test of time.

No Order Too Small or Too Large

At Stontek® Cabinetry, we are dedicated to serving dealers and trade professionals exclusively. We welcome orders of any size, from individual kitchen remodels to container loads of cabinets. Our flexibility is designed to accommodate your unique requirements, ensuring a seamless and hassle-free experience for our valued dealer partners.

For Trade Professionals and Beyond

Stontek® Cabinetry extends a warm welcome to trade customers, including contractors, home improvement stores, builders, and developers. We understand your unique requirements and are here to support your projects with top-tier products and exceptional service. Partner with us and experience the difference in quality and affordability.

Try Stontek® Cabinetry Today

We invite dealers and trade professionals to experience the Stontek® Cabinetry difference. Give us a try, and you'll discover that quality, affordability, and exceptional service are the cornerstones of our business. Join our satisfied partners and elevate your projects with our exquisite cabinets.

Thank you for considering Stontek® Cabinetry as your trusted source for premium kitchen cabinets.

ABOUT US

Welcome to Stontek® Cabinetry, your preferred source for premium kitchen cabinets in the vibrant Detroit area. We take immense pride in offering a stunning range of cabinets that combine superior quality with competitive pricing. At Stontek® Cabinetry, we believe that your dream kitchen should be both beautiful and affordable.

Our Competitive Edge

Stontek® Cabinetry stands out in the market thanks to our unique advantage. We directly distribute our own cabinets, sourced from overseas manufacturers, which allows us to offer competitive prices without compromising on quality. This direct approach enables us to bring you the best of both worlds - high-quality products at budget-friendly prices.

A Palette of Choices

Discover a world of possibilities with Stontek® Cabinetry. We offer an extensive selection of cabinets, including the eight most popular colors and styles, as well as the latest slim-edge shaker design that's currently trending. Whether you envision a classic, timeless kitchen or a modern, sleek aesthetic, our catalog has the perfect cabinet to bring your vision to life.



SHAKER CABINETS

Elevate Your Kitchen with Timeless Elegance

Our shaker style cabinets are a testament to the enduring appeal of classic design. Crafted with precision and care, these cabinets come in five distinct colors and styles:

Shaker Arctic (White Shaker): Clean, crisp, and versatile, Shaker Arctic cabinets bring a bright and inviting atmosphere to your kitchen.

Shaker Stone (Light Gray Shaker): Strike the perfect balance between sophistication and warmth with Shaker Stone cabinets, ideal for creating a modern and cozy kitchen.

Shaker Midnight (Blue Shaker): Make a bold statement with Shaker Midnight cabinets, injecting personality and vibrancy into your space.

Shaker Jade (Green Shaker): For a fresh and contemporary vibe, Shaker Jade cabinets are the perfect choice.

Shaker Maple (Natural Canadian Maple Wood Shaker): Experience the beauty of natural wood with Shaker Maple cabinets, adding rustic charm to your kitchen.

In all our shaker Style cabinets, we use premium wood selections, upgrade hardware, and a premium American-based grade of paint. Our meticulous attention to quality during material selection ensures that your cabinets stand the test of time, with colors that won't fade away. Each cabinet is constructed using the most durable dovetail construction to withstand frequent use without falling apart. The upgraded hardware enhances functionality and durability, while multiple layers of paint ensure a smooth surface finish and long-lasting color protection. The feel and touch of these cabinets exemplify our commitment to excellence.



SHAKER ARCTIC (SA)



SHAKER STONE (SS)



SHAKER MIDNIGHT (SN)



SHAKER JADE (SJ)



SHAKER MAPLE (SM)

SUNSET CABINETS

Embrace Modern Elegance with Slim Shaker Cabinets

Discover the latest trend in cabinet design with Stontek® Cabinetry's Slim Shaker Cabinets, the Sunset Collection. This collection offers a sleek and contemporary aesthetic, perfect for those looking to infuse a modern vibe into their kitchen. Our Sunset Cabinets are designed to redefine your kitchen's style and functionality, available in three distinctive options:

Sunset Pearl (White Slim Shaker): The soft and neutral Sunset Pearl cabinets exude sophistication and versatility, allowing you to create a calming and elegant kitchen space.

Sunset Onyx (Black Slim Shaker): Make a bold statement with Sunset Onyx cabinets, adding a touch of drama and modern elegance to your kitchen.

Sunset Oak (Natural American White Oak Slim Shaker): Experience the timeless beauty of American white oak in a modern slim edge shaker style with Sunset Oak cabinets, blending classic charm with contemporary design.

In our Sunset Cabinets, we maintain our commitment to premium wood selection, upgraded hardware, and a superior American-based paint grade. Quality and durability are at the forefront of our design, ensuring that your cabinets are not only visually striking but also built to last. Embrace modern elegance and redefine your kitchen's aesthetics with Stontek® Cabinetry's Slim Edge Shaker Cabinets.



SUNSET PEARL (SP)



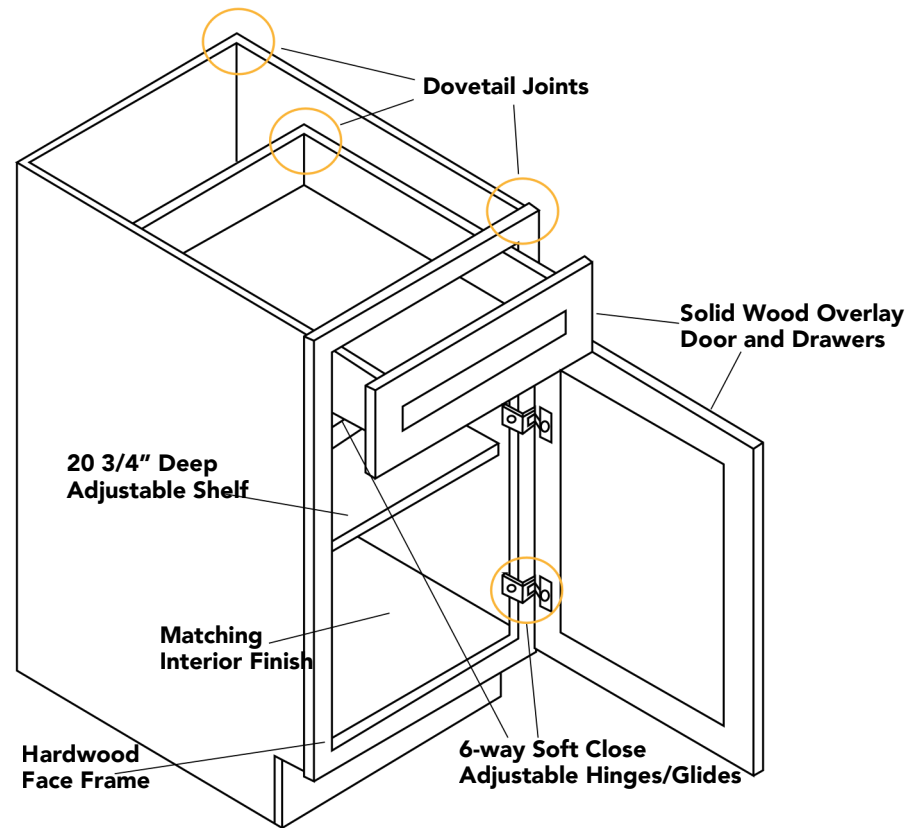
SUNSET ONYX (SX)



SUNSET OAK (SO)

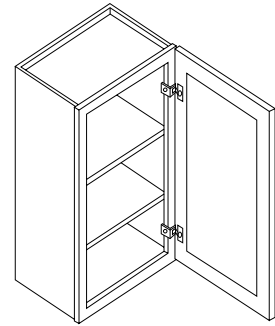


Cabinet Construction



| | SHAKER ARCTIC (SA) | SHAKER STONE (SS) | SHAKER MIDNIGHT (SN) | SHAKER JADE (SJ) | SHAKER MAPLE (SM) | SUNSET PEARL (SP) | SUNSET ONYX (SX) | SUNSET OAK (SO) |
|---------------------------------|---|---|---|---|---|---|---|---|
| Cabinet Box | 1/2", 7 Ply, Plywood, Dovetail Joints | 1/2", 7 Ply, Plywood, Dovetail Joints | 1/2", 7 Ply, Plywood, Dovetail Joints | 1/2", 7 Ply, Plywood, Dovetail Joints | 1/2", 7 Ply, Plywood, Dovetail Joints | 1/2", 7 Ply, Plywood, Dovetail Joints | 1/2", 7 Ply, Plywood, Dovetail Joints | 1/2", 7 Ply, Plywood, Dovetail Joints |
| Drawer Box | 5/8" Solid Wood, Dovetail Joints | 5/8" Solid Wood, Dovetail Joints | 5/8" Solid Wood, Dovetail Joints | 5/8" Solid Wood, Dovetail Joints | 5/8" Solid Wood, Dovetail Joints | 5/8" Solid Wood, Dovetail Joints | 5/8" Solid Wood, Dovetail Joints | 5/8" Solid Wood, Dovetail Joints |
| Drawer Slides | Under Mount, Full Extension, Metal, Soft Close w/ Ball Bearings, DTC Hardward | Under Mount, Full Extension, Metal, Soft Close w/ Ball Bearings, DTC Hardward | Under Mount, Full Extension, Metal, Soft Close w/ Ball Bearings, DTC Hardward | Under Mount, Full Extension, Metal, Soft Close w/ Ball Bearings, DTC Hardward | Under Mount, Full Extension, Metal, Soft Close w/ Ball Bearings, DTC Hardward | Under Mount, Full Extension, Metal, Soft Close w/ Ball Bearings, DTC Hardward | Under Mount, Full Extension, Metal, Soft Close w/ Ball Bearings, DTC Hardward | Under Mount, Full Extension, Metal, Soft Close w/ Ball Bearings, DTC Hardward |
| Wood Species | Birch | Birch | Birch | Birch | Birch | Birch | Birch | Birch |
| Door Hinge | DTC 6-Way Adjustable, Soft Close | DTC 6-Way Adjustable, Soft Close | DTC 6-Way Adjustable, Soft Close | DTC 6-Way Adjustable, Soft Close | DTC 6-Way Adjustable, Soft Close | DTC 6-Way Adjustable, Soft Close | DTC 6-Way Adjustable, Soft Close | DTC 6-Way Adjustable, Soft Close |
| Shelves | Adjustable, 3/4" Plywood | Adjustable, 3/4" Plywood | Adjustable, 3/4" Plywood | Adjustable, 3/4" Plywood | Adjustable, 3/4" Plywood | Adjustable, 3/4" Plywood | Adjustable, 3/4" Plywood | Adjustable, 3/4" Plywood |
| Finish Color | Arctic White | Stone Gray | Midnight Blue | Jade Green | Maple (Natural) | Pearl White | Onyx Black | Oak (Natural) |
| Exterior Finish | Matching Door | Matching Door | Matching Door | Matching Door | Matching Door | Matching Door | Matching Door | Matching Door |
| Interior Finish | Matching Inter | Matching Interior | Matching Interior | Natural | Matching Interior | Matching Interior | Matching Interior | Matching Interior |
| Base Reinforcement | 3" Plywood Stretchers | 3" Plywood Stretchers | 3" Plywood Stretchers | 3" Plywood Stretchers | 3" Plywood Stretchers | 3" Plywood Stretchers | 3" Plywood Stretchers | 3" Plywood Stretchers |
| Face Frame | 1 1/2" Rails and Stiles, Solid Wood | 1 1/2" Rails and Stiles, Solid Wood | 1 1/2" Rails and Stiles, Solid Wood | 1 1/2" Rails and Stiles, Solid Wood | 1 1/2" Rails and Stiles, Solid Wood | 1 1/2" Rails and Stiles, Solid Wood | 1 1/2" Rails and Stiles, Solid Wood | 1 1/2" Rails and Stiles, Solid Wood |
| Full Overlay Door/Drawer | 5-Piece w/ Solid Center Panel, 3 1/2" Stiles and Rails | 5-Piece w/ Solid Center Panel, 3 1/2" Stiles and Rails | 5-Piece w/ Solid Center Panel, 3 1/2" Stiles and Rails | 5-Piece w/ Solid Center Panel, 3 1/2" Stiles and Rails | 5-Piece w/ Solid Center Panel, 3 1/2" Stiles and Rails | 5-Piece w/ Solid Center Panel, 3 1/2" Stiles and Rails | 5-Piece w/ Solid Center Panel, 3 1/2" Stiles and Rails | 5-Piece w/ Solid Center Panel, 3 1/2" Stiles and Rails |
| Design & Structure | Meets Leading Industry Standards | Meets Leading Industry Standards | Meets Leading Industry Standards | Meets Leading Industry Standards | Meets Leading Industry Standards | Meets Leading Industry Standards | Meets Leading Industry Standards | Meets Leading Industry Standards |
| Assembly | Staples, Nails, and Brackets | Staples, Nails, and Brackets | Staples, Nails, and Brackets | Staples, Nails, and Brackets | Staples, Nails, and Brackets | Staples, Nails, and Brackets | Staples, Nails, and Brackets | Staples, Nails, and Brackets |

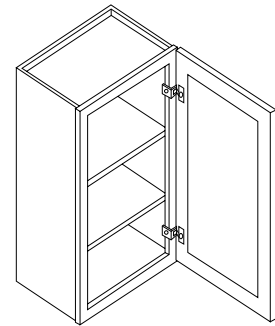
30" WALL CABINET SINGLE DOOR



| | W | H | D |
|-------|-----|-----|-----|
| W0930 | 9" | 30" | 12" |
| W1230 | 12" | 30" | 12" |
| W1530 | 15" | 30" | 12" |
| W1830 | 18" | 30" | 12" |
| W2130 | 21" | 30" | 12" |

*comes with 2 shelves

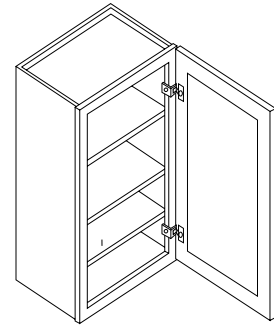
36" WALL CABINET SINGLE DOOR



| | W | H | D |
|-------|-----|-----|-----|
| W0936 | 9" | 36" | 12" |
| W1236 | 12" | 36" | 12" |
| W1536 | 15" | 36" | 12" |
| W1836 | 18" | 36" | 12" |
| W2136 | 21" | 36" | 12" |

*comes with 2 shelves

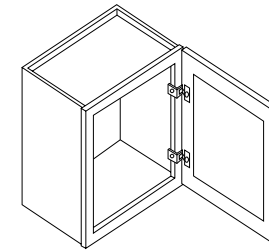
42" WALL CABINET SINGLE DOOR



| | W | H | D |
|-------|-----|-----|-----|
| W0942 | 9" | 42" | 12" |
| W1242 | 12" | 42" | 12" |
| W1542 | 15" | 42" | 12" |
| W1842 | 18" | 42" | 12" |
| W2142 | 21" | 42" | 12" |

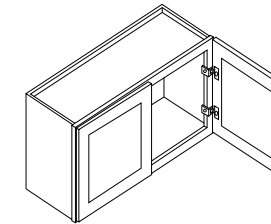
*comes with 3 shelves

12" WALL CABINET SINGLE DOOR



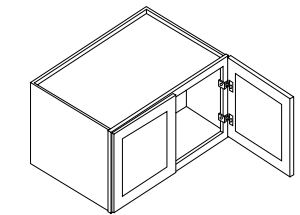
| | W | H | D |
|-------|-----|-----|-----|
| W1212 | 12" | 12" | 12" |
| W1512 | 15" | 12" | 12" |
| W1812 | 18" | 12" | 12" |
| W2112 | 21" | 12" | 12" |

12"/15"/18"/21" WALL CABINET DOUBLE DOOR



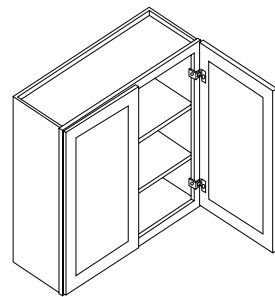
| | W | H | D |
|-------|-----|-----|-----|
| W2412 | 24" | 12" | 12" |
| W2712 | 27" | 12" | 12" |
| W3012 | 30" | 12" | 12" |
| W3312 | 33" | 12" | 12" |
| W3612 | 36" | 12" | 12" |
| W2415 | 24" | 15" | 12" |
| W3015 | 30" | 15" | 12" |
| W3315 | 33" | 15" | 12" |
| W3615 | 36" | 15" | 12" |
| W2418 | 24" | 18" | 12" |
| W3018 | 30" | 18" | 12" |
| W3318 | 33" | 18" | 12" |
| W3618 | 36" | 18" | 12" |
| W2421 | 24" | 21" | 12" |
| W3021 | 30" | 21" | 12" |
| W3321 | 33" | 21" | 12" |
| W3621 | 36" | 21" | 12" |

12"/15"/18"/21" REFRIGERATOR WALL CABINET



| | W | H | D |
|---------|-----|-----|-----|
| W301224 | 30" | 12" | 24" |
| W301524 | 30" | 15" | 24" |
| W301824 | 30" | 18" | 24" |
| W302124 | 30" | 21" | 24" |
| W331224 | 30" | 12" | 24" |
| W331524 | 30" | 15" | 24" |
| W331824 | 30" | 18" | 24" |
| W332124 | 30" | 21" | 24" |
| W361224 | 30" | 12" | 24" |
| W361524 | 33" | 15" | 24" |
| W361824 | 36" | 18" | 24" |
| W362124 | 24" | 21" | 24" |

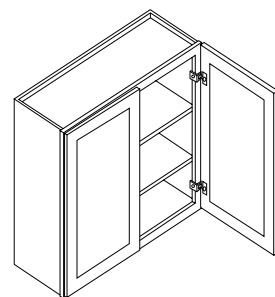
30" WALL CABINET DOUBLE DOOR



| | W | H | D |
|-------|-----|-----|-----|
| W2430 | 24" | 30" | 12" |
| W2730 | 27" | 30" | 12" |
| W3030 | 30" | 30" | 12" |
| W3330 | 33" | 30" | 12" |
| W3630 | 36" | 30" | 12" |
| W3930 | 39" | 30" | 12" |
| W4230 | 42" | 30" | 12" |

*comes with 2 shelves
*39"/42" have center stile

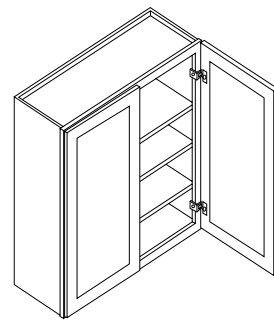
36" WALL CABINET DOUBLE DOOR



| | W | H | D |
|-------|-----|-----|-----|
| W2436 | 24" | 36" | 12" |
| W2736 | 27" | 36" | 12" |
| W3036 | 30" | 36" | 12" |
| W3336 | 33" | 36" | 12" |
| W3636 | 36" | 36" | 12" |
| W3936 | 39" | 36" | 12" |
| W4236 | 42" | 36" | 12" |

*comes with 2 shelves
*39"/42" have center stile

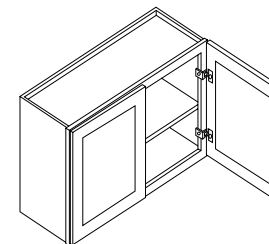
42" WALL CABINET DOUBLE DOOR



| | W | H | D |
|-------|-----|-----|-----|
| W2442 | 24" | 42" | 12" |
| W2742 | 27" | 42" | 12" |
| W3042 | 30" | 42" | 12" |
| W3342 | 33" | 42" | 12" |
| W3642 | 36" | 42" | 12" |
| W3942 | 39" | 42" | 12" |
| W4242 | 42" | 42" | 12" |

*comes with 3 shelves
*39"/42" have center stile

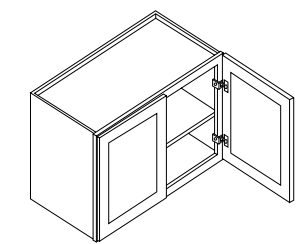
24" WALL CABINET DOUBLE DOOR



| | W | H | D |
|-------|-----|-----|-----|
| W2424 | 24" | 24" | 12" |
| W3024 | 30" | 24" | 12" |
| W3324 | 33" | 24" | 12" |
| W3624 | 36" | 24" | 12" |

*comes with 1 shelf

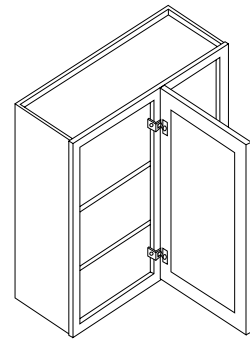
24" REFRIGERATOR WALL CABINET



| | W | H | D |
|---------|-----|-----|-----|
| W302424 | 30" | 24" | 24" |
| W332424 | 33" | 24" | 24" |
| W362424 | 36" | 24" | 24" |

*comes with 1 shelf

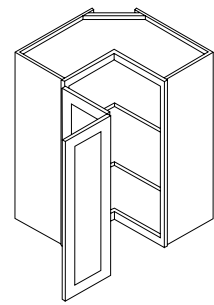
30"/36" WALL BLIND CORNER CABINET



| | W | H | D |
|---------|-----|-----|-----|
| WBC2730 | 27" | 30" | 12" |
| WBC2736 | 27" | 36" | 12" |

*comes with 2 shelves
*image shown is left hinged

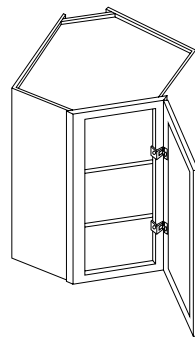
30"/36" EASY REACH CORNER WALL CABINET



| | W | H | D |
|----------|-----|-----|-----|
| WERC2430 | 24" | 30" | 12" |
| WERC2436 | 24" | 36" | 12" |

*comes with 2 shelves

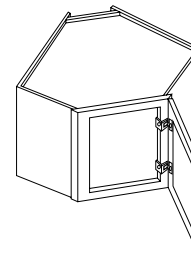
30"/36" WALL DIAGONAL CORNER CABINET



| | W | H | D |
|---------|-----|-----|-----|
| WDC2430 | 24" | 30" | 12" |
| WDC2436 | 24" | 36" | 12" |

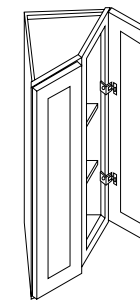
*comes with 2 shelves

12" WALL DIAGONAL CORNER CABINET



| | W | H | D |
|---------|-----|-----|-----|
| WDC2412 | 24" | 12" | 12" |

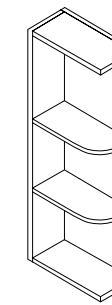
30"/36" WALL END CABINET



| | W | H | D |
|---------|-----|-----|-----|
| WEC1230 | 12" | 30" | 12" |
| WEC1236 | 12" | 36" | 12" |

*comes with 2 shelves

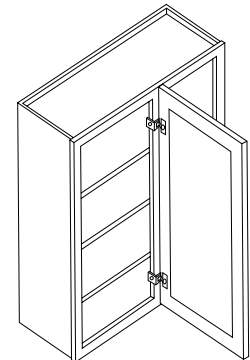
30"/36" WALL OPEN END SHELF CABINET



| | W | H | D |
|----------|-----|-----|-----|
| WOES0930 | 9" | 30" | 12" |
| WOES0936 | 9" | 36" | 12" |
| WOES1230 | 12" | 30" | 12" |
| WOES1236 | 12" | 36" | 12" |

*comes with 2 shelves

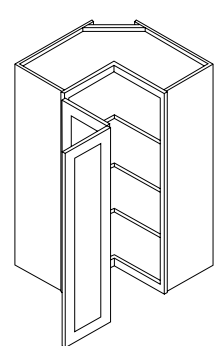
42" WALL BLIND CORNER CABINET



| | W | H | D |
|---------|-----|-----|-----|
| WBC2742 | 27" | 42" | 12" |

*comes with 3 shelves
*image shown is left hinged

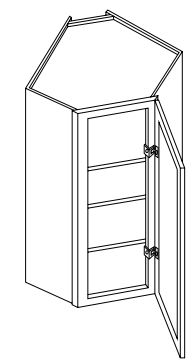
42" EASY REACH CORNER WALL CABINET



| | W | H | D |
|----------|-----|-----|-----|
| WERC2442 | 24" | 42" | 12" |

*comes with 3 shelves

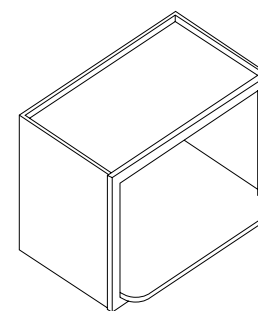
42" WALL DIAGONAL CORNER CABINET



| | W | H | D |
|---------|-----|-----|-----|
| WDC2442 | 24" | 42" | 12" |

*comes with 3 shelves

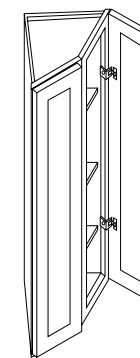
WALL MICROWAVE CABINET



| | W | H | D |
|--------|-----|-----|-----|
| WM3018 | 30" | 18" | 12" |

*shelf is 15" deep
*opening is 27"x14-1/4"

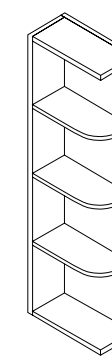
42" WALL END CABINET



| | W | H | D |
|---------|-----|-----|-----|
| WEC1242 | 12" | 42" | 12" |

*comes with 3 shelves

42" WALL OPEN END SHELF CABINET

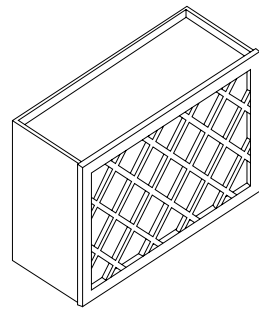


| | W | H | D |
|----------|-----|-----|-----|
| WOES0942 | 9" | 42" | 12" |
| WOES1242 | 12" | 42" | 12" |

*comes with 3 shelves

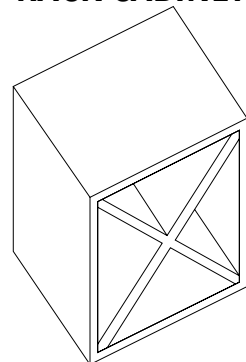
CALL TO CHECK AVAILABILITY

15"/18" CRISS -CROSSED WINE RACK CABINET



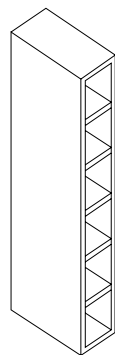
| | W | H | D |
|--------|-----|-----|-----|
| WR3015 | 30" | 15" | 12" |
| WR3615 | 36" | 15" | 12" |
| WR3018 | 30" | 18" | 12" |
| WR3618 | 36" | 18" | 12" |

18"X18" WINE RACK CABINET



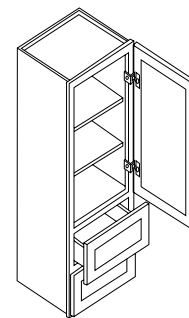
| | W | H | D |
|--------|-----|-----|-----|
| WR1818 | 18" | 18" | 12" |

6" WINE CUBE CABINET



| | W | H | D |
|---------|----|-----|-----|
| WWC0630 | 6" | 30" | 12" |
| WWC0636 | 6" | 36" | 12" |
| WWC0642 | 6" | 42" | 12" |

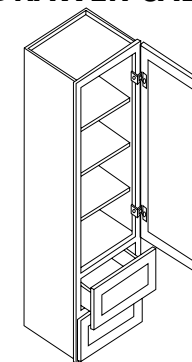
54" WALL 2-DRAWERS CABINET



| | W | H | D |
|---------|-----|-----|-----|
| W2D1854 | 18" | 54" | 15" |

*comes with 2 shelves

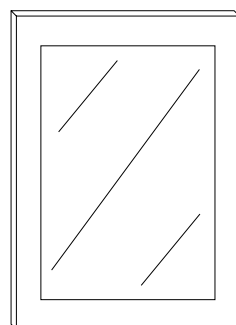
60" WALL 2-DRAWER CABINET



| | W | H | D |
|---------|-----|-----|-----|
| W2D1860 | 18" | 60" | 15" |

*comes with 3 shelves

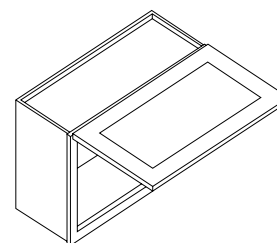
GLASS DOOR ADD-ONS FOR WALL CABINETS



| | | | | |
|---------|---------|---------|---------|-----------|
| W1530GD | W1536GD | W1542GD | W1212GD | WDC2412GD |
| W1830GD | W1836GD | W1842GD | W1512GD | WDC2430GD |
| W2430GD | W2436GD | W2442GD | W1812GD | WDC2436GD |
| W2730GD | W2736GD | W2742GD | W2112GD | WDC2442GD |
| W3030GD | W3036GD | W3042GD | W2412GD | |
| | | | W2712GD | |
| | | | W3012GD | W301224GD |
| | | | W3312GD | W331224GD |
| | | | W3612GD | W361224GD |

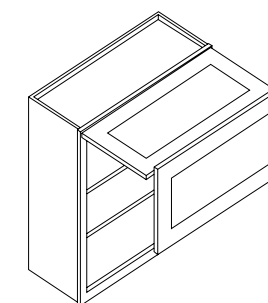
ONLY AVAILABLE IN SHAKER SERIES

30" WALL FLIP UP DOOR CABINET



| | W | H | D |
|----------|-----|-----|-----|
| W3015FUD | 30" | 15" | 12" |
| W3018FUD | 30" | 18" | 12" |

30" WALL FLIP UP DOUBLE DOOR CABINET

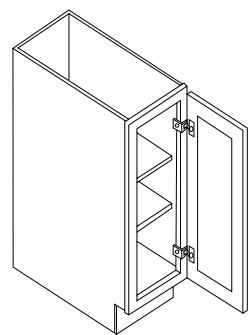


| | W | H | D |
|----------|-----|-----|-----|
| W3030FUD | 30" | 30" | 12" |
| W3036FUD | 30" | 36" | 12" |

*comes with 2 shelves

CALL TO CHECK AVAILABILITY

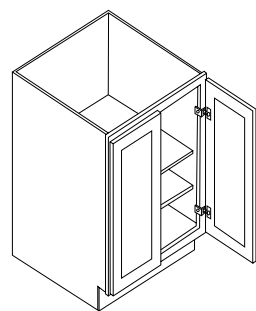
BASE CABINET FULL HEIGHT SINGLE DOOR



| | W | H | D |
|--------|-----|-------|-----|
| B06FHD | 6" | 34.5" | 24" |
| B09FHD | 9" | 34.5" | 24" |
| B18FHD | 18" | 34.5" | 24" |

*comes with 2 shelves

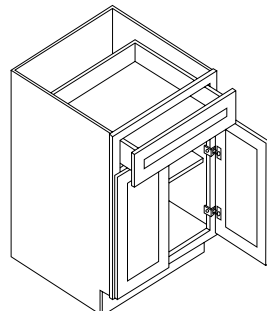
BASE CABINET FULL HEIGHT DOUBLE DOOR



| | W | H | D |
|--------|-----|-------|-----|
| B24FHD | 24" | 34.5" | 24" |
| B30FHD | 30" | 34.5" | 24" |

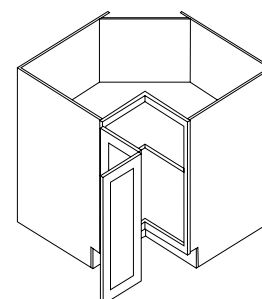
*comes with 2 shelves

BASE CABINET TWO DOORS/ONE DRAWER



| | W | H | D |
|-----|-----|-------|-----|
| B24 | 24" | 34.5" | 24" |
| B27 | 27" | 34.5" | 24" |
| B30 | 30" | 34.5" | 24" |

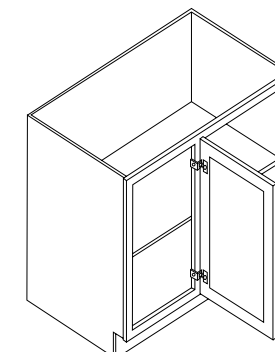
EASY REACH BASE CABINET



| | W | H | D |
|-------|-----|-------|-----|
| ERB33 | 33" | 34.5" | 24" |
| ERB36 | 36" | 34.5" | 24" |

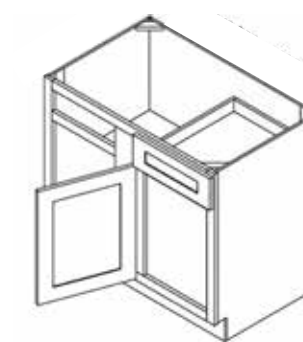
*lazy susan tray are available for add-on

BASE BLIND CORNER CABINET



| | W | H | D |
|-------|-----|-------|-----|
| BBC39 | 36" | 34.5" | 24" |
| BBC42 | 39" | 34.5" | 24" |

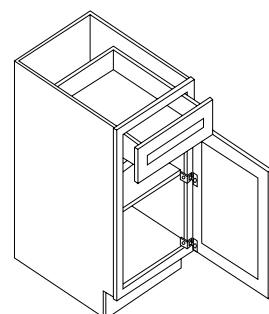
*min. pull out 3"
*BBC39/BBC42 max pull out 9"



| | W | H | D |
|-------|-----|-------|-----|
| BBC45 | 42" | 34.5" | 24" |

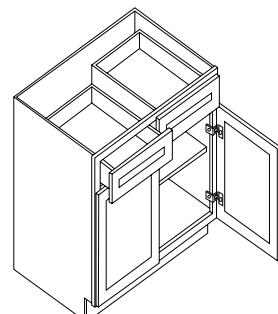
*min. pull out 3"
*BBC45 max pull out 6"
*BBC45 has a drawer

BASE CABINET ONE DOOR/ONE DRAWER



| | W | H | D |
|-----|-----|-------|-----|
| B12 | 12" | 34.5" | 24" |
| B15 | 15" | 34.5" | 24" |
| B18 | 18" | 34.5" | 24" |
| B21 | 21" | 34.5" | 24" |

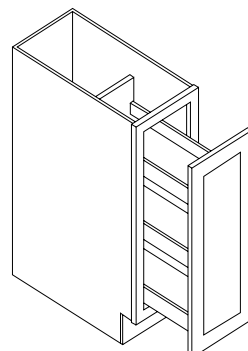
BASE CABINET TWO DOOR/ TWO DRAWERS



| | W | H | D |
|-----|-----|-------|-----|
| B33 | 33" | 34.5" | 24" |
| B36 | 36" | 34.5" | 24" |
| B39 | 39" | 34.5" | 24" |
| B42 | 42" | 34.5" | 24" |

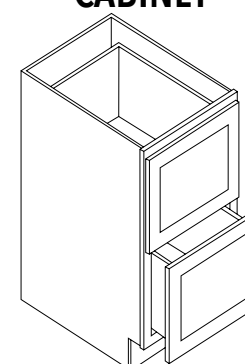
*39"/42" have center stile

BASE SPICE RACK CABINET



| | W | H | D |
|-------|-----|-------|-----|
| B06SR | 6" | 34.5" | 24" |
| B09SR | 9" | 34.5" | 24" |
| B12SR | 12" | 34.5" | 24" |

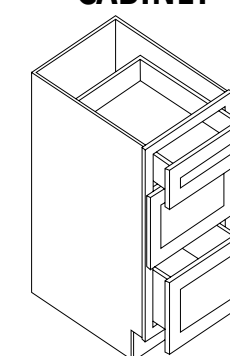
TWO DRAWERS BASE CABINET



| | W | H | D |
|--------|-----|-------|-----|
| DB24-2 | 24" | 34.5" | 24" |
| DB30-2 | 30" | 34.5" | 24" |

*drawer height: 14-1/4"

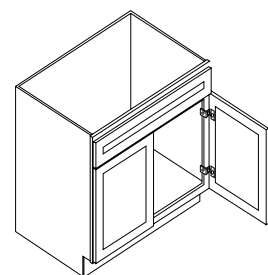
THREE DRAWERS BASE CABINET



| | W | H | D |
|--------|-----|-------|-----|
| DB12-3 | 12" | 34.5" | 24" |
| DB15-3 | 15" | 34.5" | 24" |
| DB18-3 | 18" | 34.5" | 24" |
| DB21-3 | 21" | 34.5" | 24" |
| DB24-3 | 24" | 34.5" | 24" |
| DB27-3 | 27" | 34.5" | 24" |
| DB30-3 | 30" | 34.5" | 24" |
| DB33-3 | 33" | 34.5" | 24" |
| DB36-3 | 36" | 34.5" | 24" |

*drawer height (bottom 2): 11-1/8"

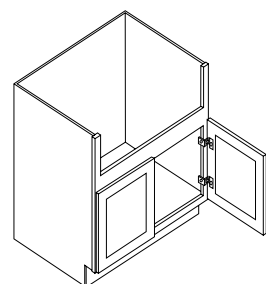
SINK BASE CABINET



| | W | H | D |
|------|-----|-------|-----|
| SB27 | 27" | 34.5" | 24" |
| SB30 | 30" | 34.5" | 24" |
| SB33 | 33" | 34.5" | 24" |
| SB36 | 36" | 34.5" | 24" |
| SB42 | 42" | 34.5" | 24" |

*false drawer front

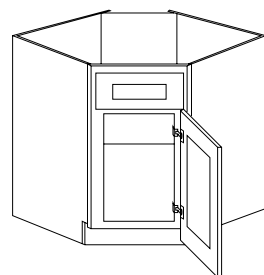
FARM SINK BASE CABINET



| | W | H | D |
|-------|-----|-------|-----|
| FSB30 | 30" | 34.5" | 24" |
| FSB36 | 36" | 34.5" | 24" |

*FSB30 fits max 27" sink
*FSB36 fits max 33" sink

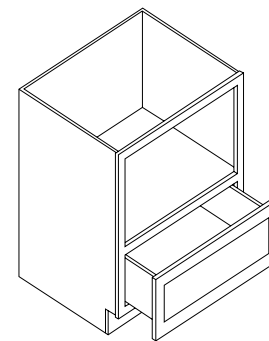
SINK BASE ANGLE CABINET



| | W | H | D |
|-------|-----|-------|-----|
| SBA36 | 36" | 34.5" | 24" |

*false drawer front

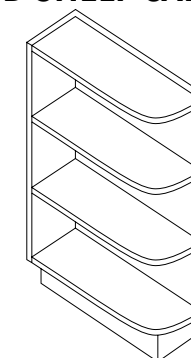
BASE MICROWAVE CABINET



| | W | H | D |
|-------|-----|-------|-----|
| BMC30 | 30" | 34.5" | 24" |

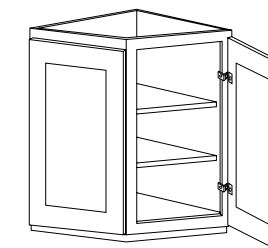
*opening is 27"x16-1/8"

BASE OPEN END SHELF CABINET



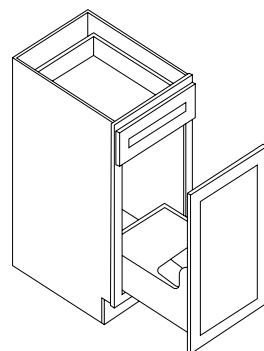
| | W | H | D |
|--------|----|-------|-----|
| BOES09 | 9" | 34.5" | 24" |

BASE END CABINET



| | W | H | D |
|-------|-----|-------|-----|
| BEC24 | 24" | 34.5" | 24" |

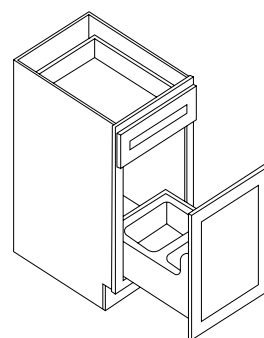
BASE SINGLE WASTE BASKET CABINET



| | W | H | D |
|-------|-----|-------|-----|
| BWB15 | 15" | 34.5" | 24" |

*trash bin sold separately

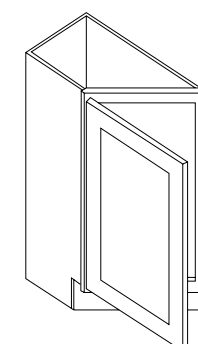
BASE DOUBLE WASTE BASKET CABINET



| | W | H | D |
|-------|-----|-------|-----|
| BWB18 | 18" | 34.5" | 24" |
| BWB21 | 21" | 34.5" | 24" |

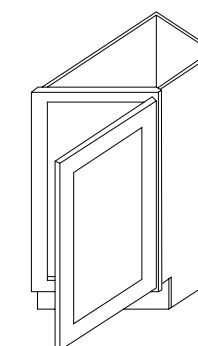
*trash bin sold separately

BASE TRANSITIONAL CABINET



| | W | H | D |
|--------|-----|-------|-----|
| BTC12L | 12" | 34.5" | 24" |

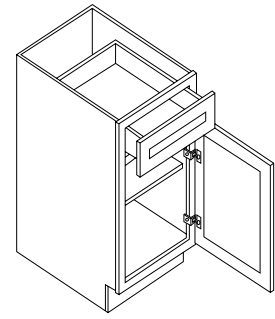
*depth transitions from 24" to 12"
*L/R is the transitional side



| | W | H | D |
|--------|-----|-------|-----|
| BTC12R | 12" | 34.5" | 24" |

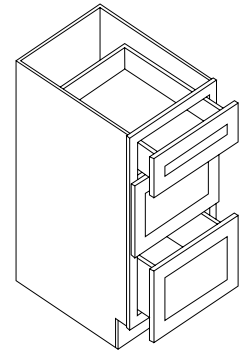
*depth transitions from 24" to 12"
*L/R is the transitional side

VANITY BASE CABINET ONE DOOR/ONE DRAWER



| | W | H | D |
|------|-----|-------|-----|
| VB12 | 12" | 34.5" | 21" |
| VB15 | 15" | 34.5" | 21" |
| VB18 | 18" | 34.5" | 21" |
| VB21 | 21" | 34.5" | 21" |

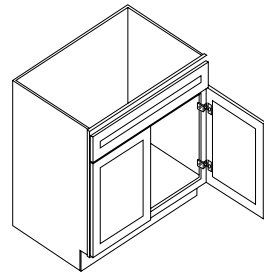
VANITY DRAWER BASE CABINET



| | W | H | D |
|-------|-----|-------|-----|
| VDB12 | 12" | 34.5" | 21" |
| VDB15 | 15" | 34.5" | 21" |
| VDB18 | 18" | 34.5" | 21" |
| VDB21 | 21" | 34.5" | 21" |

*drawer height (bottom 2): 11-1/8"

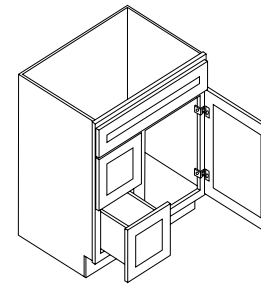
VANITY SINK BASE CABINET



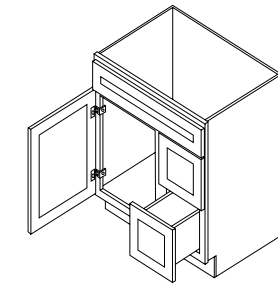
| | W | H | D |
|-------|-----|-------|-----|
| VSB24 | 24" | 34.5" | 21" |
| VSB27 | 27" | 34.5" | 21" |
| VSB30 | 30" | 34.5" | 21" |
| VSV36 | 36" | 34.5" | 21" |

*false drawer front

30" VANITY BASE CABINET COMBO



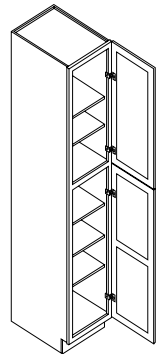
| | W | H | D |
|--------|-----|-------|-----|
| VSD30L | 30" | 34.5" | 21" |



| | W | H | D |
|--------|-----|-------|-----|
| VSD30R | 30" | 34.5" | 21" |

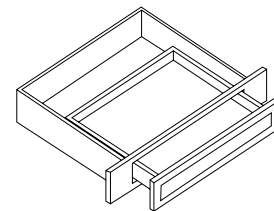
*false drawer front
*L/R is the side of the drawers

VANITY LINEN CABINET



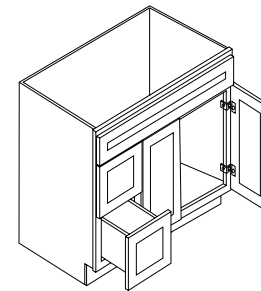
| | W | H | D |
|--------|-----|-----|-----|
| VP1884 | 18" | 84" | 21" |

Knee Drawer

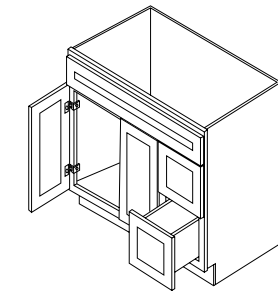


| | W | H | D |
|------|-----|------|-----|
| KN30 | 30" | 4.5" | 21" |

36" VANITY BASE CABINET COMBO



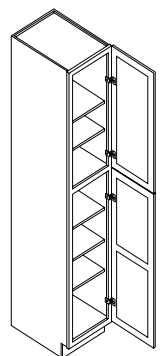
| | W | H | D |
|--------|-----|-------|-----|
| VSD36L | 36" | 34.5" | 21" |



| | W | H | D |
|--------|-----|-------|-----|
| VSD36R | 36" | 34.5" | 21" |

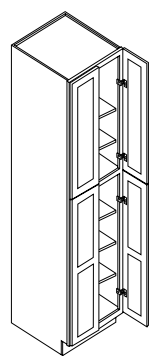
*false drawer front
*L/R is the side of the drawers

**18" PANTRY CABINET
SINGLE DOOR**



| | W | H | D |
|-------|-----|-----|-----|
| P1884 | 18" | 84" | 24" |
| P1890 | 18" | 90" | 24" |
| P1896 | 18" | 96" | 24" |

**24"/30" PANTRY CABINET
DOUBLE DOOR**



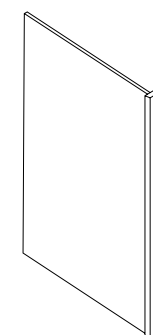
| | W | H | D |
|-------|-----|-----|-----|
| P2484 | 24" | 84" | 24" |
| P2490 | 24" | 90" | 24" |
| P2496 | 24" | 96" | 24" |
| P3084 | 30" | 84" | 24" |
| P3090 | 30" | 90" | 24" |
| P3096 | 30" | 96" | 24" |

BASE FILLER



| | W | H |
|-----|----|-------|
| BF3 | 3" | 34.5" |
| BF6 | 6" | 34.5" |

**DISH WASHER PANEL
W/ 3" RETURN**



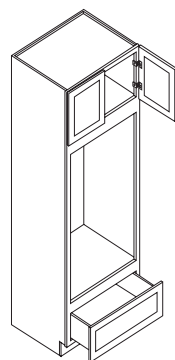
| | W | H | D |
|------|----|-------|-----|
| DWP3 | 3" | 34.5" | 24" |

REFRIGERATOR PANEL



| | W | H | D |
|---------|-----|-----|------|
| REP3096 | 30" | 96" | 3/4" |

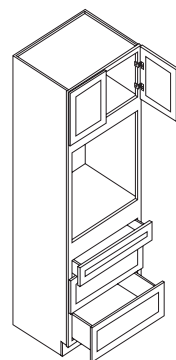
DOUBLE OVEN CABINET



| | W | H | D |
|---------|-------|-----|-----|
| OC3184D | 31.5" | 84" | 24" |
| OC3190D | 31.5" | 90" | 24" |
| OC3196D | 31.5" | 96" | 24" |

*opening is 28-1/2"x49-3/4"

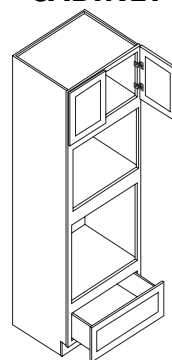
SINGLE OVEN CABINET



| | W | H | D |
|---------|-------|-----|-----|
| OC3184S | 31.5" | 84" | 24" |
| OC3190S | 31.5" | 90" | 24" |
| OC3196S | 31.5" | 96" | 24" |

*opening is 28-1/2"x30"

**SINGLE OVEN/MICROWAVE
CABINET**



| | W | H | D |
|----------|-------|-----|-----|
| OC3184SM | 31.5" | 84" | 24" |
| OC3190SM | 31.5" | 90" | 24" |
| OC3196SM | 31.5" | 96" | 24" |

*microwave opening is 28-1/2"x19"
*oven opening is 28-1/2"x27-1/8"

WALL/TALL FILLER



| | W | H |
|-------|----|-----|
| WF330 | 3" | 30" |
| WF336 | 3" | 36" |
| WF342 | 3" | 42" |
| WF630 | 6" | 30" |
| WF636 | 6" | 36" |
| WF642 | 6" | 42" |
| TF396 | 3" | 96" |
| TF696 | 6" | 96" |

**REFRIGERATOR PANEL
W/ 1 1/2" RETURN**



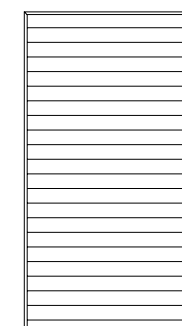
| | W | H | D |
|---------|------|-----|-----|
| REP2496 | 1.5" | 96" | 24" |

BASE PANEL



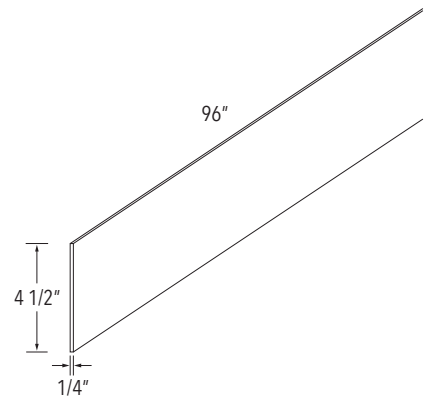
| | W | H | D |
|--------|-----|-----|------|
| PN4896 | 48" | 96" | 1/4" |

BEAD BOARD PANEL

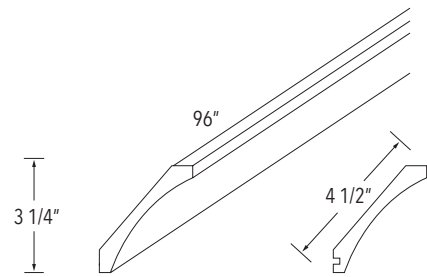


| | W | H | D |
|---------|-----|-----|------|
| BPN4896 | 48" | 96" | 1/4" |

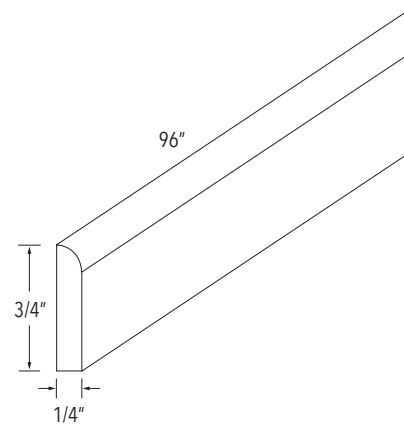
TOE KICK (TK8)



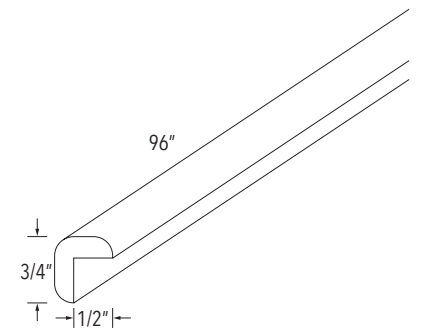
COVE MOLDING (COV8)



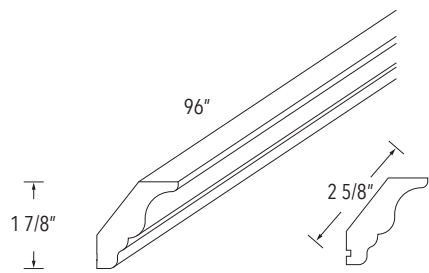
SCRIBE MOLDING (SM8)



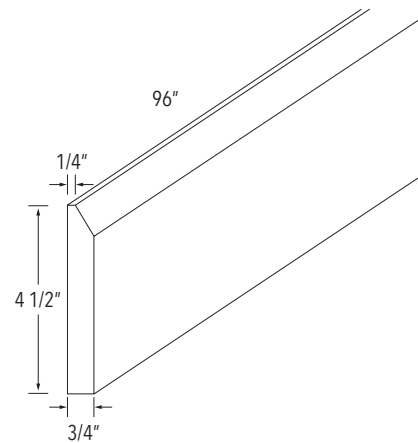
OUTSIDE CORNER MOLDING (OCM8)



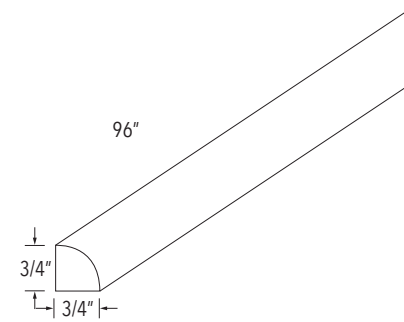
CROWN MOLDING 2 1/2" (CM2)



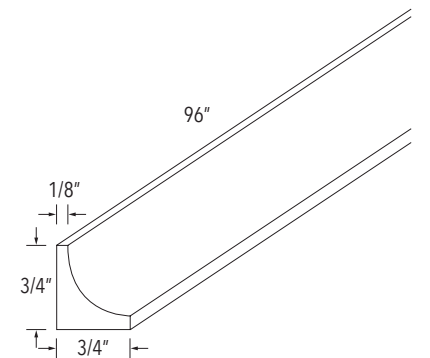
BASE BOARD (BBM8)



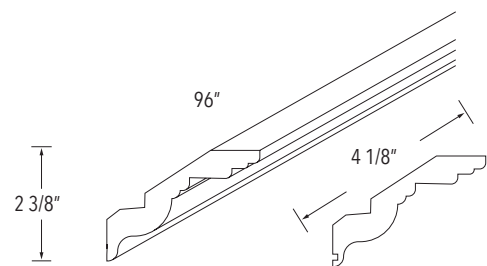
QUARTER ROUND MOLDING (QRM8)



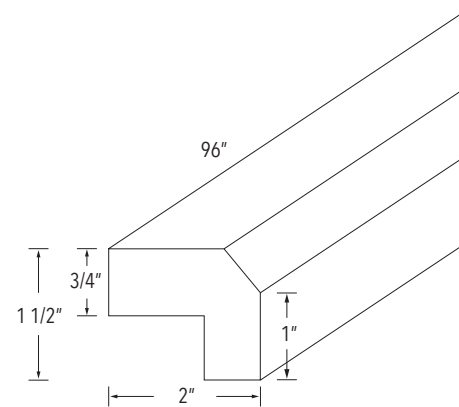
INSIDE CORNER MOLDING (ICM8)



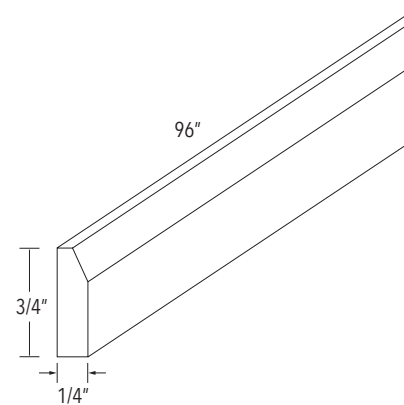
CROWN MOLDING 4 1/2" (CM4)



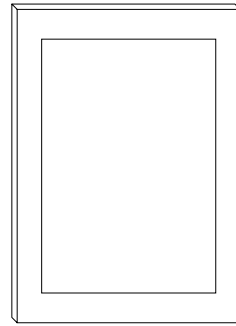
LIGHT RAIL MOLDING (LRM8)



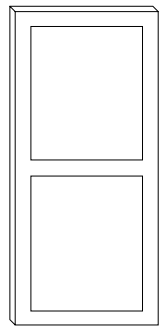
SCRIBE BEVELED MOLDING (SBM8)



DUMMY DOORS

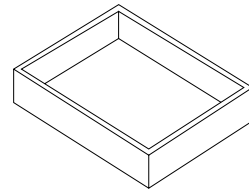


| | W | H | D |
|----------|-----|-----|------|
| BRP2430 | 24" | 30" | 3/4" |
| WRP1212 | 12" | 12" | 3/4" |
| WRP1230 | 12" | 30" | 3/4" |
| WRP1236 | 12" | 36" | 3/4" |
| WRP1242 | 12" | 42" | 3/4" |
| UPRP2436 | 24" | 36" | 3/4" |
| UPRP2442 | 24" | 42" | 3/4" |



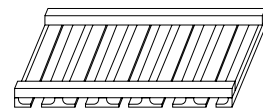
| | W | H | D |
|------|-----|-------|------|
| BPRP | 24" | 49.5" | 3/4" |

ROLL OUT TRAYS



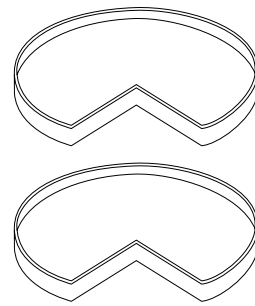
| | W | H | D |
|-------|-----|--------|---------|
| ROT12 | 8" | 4 1/4" | 19 3/8" |
| ROT15 | 11" | 4 1/4" | 19 3/8" |
| ROT18 | 14" | 4 1/4" | 19 3/8" |
| ROT21 | 17" | 4 1/4" | 19 3/8" |
| ROT24 | 20" | 4 1/4" | 19 3/8" |
| ROT27 | 23" | 4 1/4" | 19 3/8" |
| ROT30 | 26" | 4 1/4" | 19 3/8" |
| ROT33 | 29" | 4 1/4" | 19 3/8" |
| ROT36 | 32" | 4 1/4" | 19 3/8" |

STEM GLASS HOLDERS



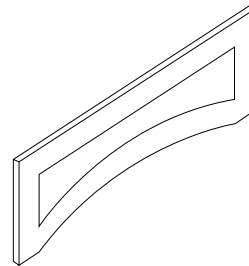
| | W | H | D |
|-------|-------|------|-------|
| SGH30 | 28.5" | 1.5" | 10.5" |
| SGH36 | 34.5" | 1.5" | 10.5" |

LAZY SUSAN TRAYS



| | W |
|------------|---------|
| BLS33-TRAY | 25-7/8" |
| BLS36-TRAY | 28-3/4" |

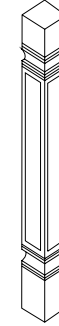
VALANCE



| | W | H | D |
|-------|-----|-----|------|
| VAL36 | 36" | 12" | 3/4" |
| VAL48 | 48" | 12" | 3/4" |
| VAL60 | 60" | 12" | 3/4" |
| VAL72 | 72" | 12" | 3/4" |

*VAL36 is a Flat Panel

POST



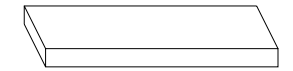
| | W | H | D |
|------|------|-------|------|
| POST | 3.5" | 34.5" | 3.5" |

CORBEL



| | W | H | D |
|--------|----|-----|----|
| CORBEL | 6" | 12" | 5" |

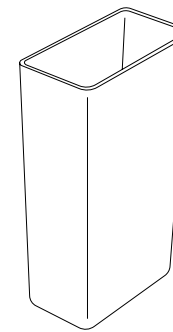
FLOATING SHELVES



| | W | H | D |
|-------|-----|------|-----|
| FLS36 | 36" | 2.5" | 10" |
| FLS48 | 48" | 2.5" | 10" |

CALL TO CHECK AVAILABILITY

TRASH BIN



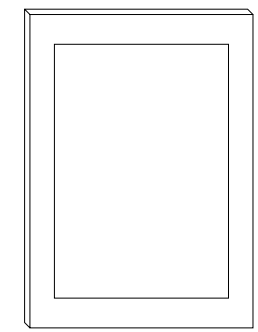
| | NEED |
|----------|------|
| BWB15 | 1 |
| BWB18/21 | 2 |

TOUCH-UP KIT

Includes: Touch-Up Marker
Sponge
Crayon
Plastic Blade

| |
|----------------------|
| SHAKER ARCTIC (SA) |
| SHAKER STONE (SS) |
| SHAKER MIDNIGHT (SN) |
| SHAKER JADE (SJ) |
| SHAKER MAPLE (SM) |
| VIDAR PEARL (VP) |
| VIDAR ONYX (VX) |
| VIDAR OAK (VO) |

SAMPLE DOOR



| |
|----------------------|
| SHAKER ARCTIC (SA) |
| SHAKER STONE (SS) |
| SHAKER MIDNIGHT (SN) |
| SHAKER JADE (SJ) |
| SHAKER MAPLE (SM) |
| VIDAR PEARL (VP) |
| VIDAR ONYX (VX) |
| VIDAR OAK (VO) |

Stontek®

C A B I N E T R Y

130 S Telegraph Rd
Waterford, MI 48328

248.772.9482

www.stontek.com